

PUNTO ● TILES | 45X45

CAPITAL p.2

COSMOS p.12

ICON p.18

MINERAL p.26

SUBWAY p.36

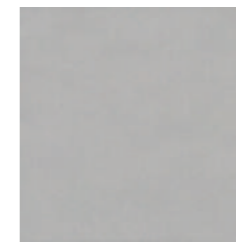
CAPITAL



Capital Beige



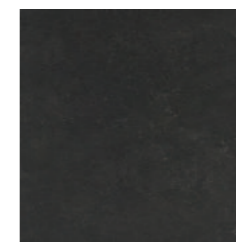
Capital Tobacco



Capital Light Grey



Capital Mid Grey



Capital Dark Grey



Capital Beige_45x45_18"x18"



Capital Tobacco_45x45_18"x18"



Capital Light Grey / Mid Grey_45x45_18"x18"



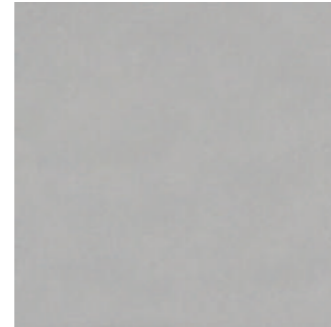
Capital Dark Grey_45x45_18"x18"



BEIGE
PT 45CP1N 45x45 - 18"x18"



TOBACCO
PT 45CP2N 45x45 - 18"x18"



LIGHT GREY
PT 45CP3N 45x45 - 18"x18"



MID GREY
PT 45CP4N 45x45 - 18"x18"



DARK GREY
PT 45CP5N 45x45 - 18"x18"

Battiscopa

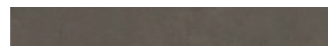
Skirting | Sockel | Plinthe | Plint



BEIGE
PT 45CP10N 7x45 - 3"x18"



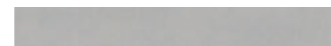
MID GREY
PT 45CP40N 7x45 - 3"x18"



TOBACCO
PT 45CP20N 7x45 - 3"x18"



DARK GREY
PT 45CP50N 7x45 - 3"x18"



LIGHT GREY
PT 45CP30N 7x45 - 3"x18"

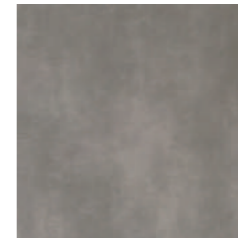
Conforme UNI EN 14411 All. G Bla Group | Comply with UNI EN 14411 All. G Gruppe Bla | Erfüllt UNI EN 14411 All. G Gruppe Bla | Classification Uni En 14411 All. G Bla Group



CAPITAL

FORMATO SIZE - FORMAT FORMAT - FORMAAT	Pz./Scat. Pcs/Box - St/Krt Pcs/Bte - St/Doos	Mq/Scat. M2/Box - M2/Krt M2/Bte - M2/Doos	Peso/Scat. Weight/Box - Gewicht/Krt Poids/Bte - Gewicht/Doos	Scat./pal Boxes/Pal - Krt/Pal Bte/Pal - Dozen/Pal	Mq/Pal M2/Pal - M2/Pal M2/Pal - M2/Pal	Peso/pal Weight/Pal - Gewicht/Pal Poids/Pal - Gewicht/Pal
45X45X0,9	8	1.63	27.33	44	71.72	1202.52
7X45 Battiscopa	18	/	/	/	/	/

COSMOS



Cosmos Grey



Cosmos Black



Cosmos Grey / Black_45x45_18"x18"



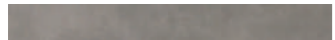
GREY
PT 45CM1N 45x45 - 18"x18"



BLACK
PT 45CM2N 45x45 - 18"x18"

Battiscopa

Skirting | Sockel | Plinthe | Plint



GREY
PT 45CM10N 7x45 - 3"x18"



BLACK
PT 45CM20N 7x45 - 3"x18"

Conforme UNI EN 14411 All. G Bla Group | Comply with UNI EN 14411 All. G Gruppe Bla | Erfüllt UNI EN 14411 All. G Gruppe Bla | Classification Uni En 14411 All. G Bla Group



COSMOS

FORMATO SIZE - FORMAT FORMAT - FORMAAT	Pz./Scat. Pcs/Box - St/Krt Pcs/Bte - St/Doos	Mq/Scat. M2/Box - M2/Krt M2/Bte - M2/Doos	Peso/Scat. Weight/Box - Gewicht/Krt Poids/Bte - Gewicht/Doos	Scat./pal Boxes/Pal - Krt/Pal Bte/Pal - Dozen/Pal	Mq/Pal M2/Pal - M2/Pal M2/Pal - M2/Pal	Peso/pal Weight/Pal - Gewicht/Pal Poids/Pal - Gewicht/Pal
45X45X0,9	8	1.63	27.33	44	71.72	1202.52
7X45 Battiscopa	18	/	/	/	/	/

ICON



Icon Almond



Icon Black



Icon Gray



Icon Olive



Icon Almond_45x45_18"x18"



Icon Olive_45x45_18"x18"



Icon Gray / Black_45x45_18"x18"



ALMOND
PT J85725 45x45 - 18"x18"



BLACK
PT J85726 45x45 - 18"x18"



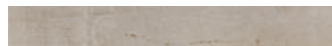
GRAY
PT J85727 45x45 - 18"x18"



OLIVE
PT J85728 45x45 - 18"x18"

Battiscopa

Skirting | Sockel | Plinthe | Plint



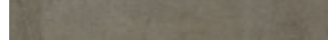
ALMOND
PT J857250 7x45 - 3"x18"



BLACK
PT J857260 7x45 - 3"x18"



GRAY
PT J857270 7x45 - 3"x18"



OLIVE
PT J857280 7x45 - 3"x18"

Conforme UNI EN 14411 All. G Bla Group | Comply with UNI EN 14411 All. G Gruppe Bla | Erfüllt UNI EN 14411 All. G Gruppe Bla | Classification Uni En 14411 All. G Bla Group



ICON

FORMATO SIZE - FORMAT FORMAT - FORMAAT	Pz./Scat. Pcs/Box - St/Krt Pcs/Bte - St/Doos	Mq/Scat. M2/Box - M2/Krt M2/Bte - M2/Doos	Peso/Scat. Weight/Box - Gewicht/Krt Poids/Bte - Gewicht/Doos	Scat./pal Boxes/Pal - Krt/Pal Bte/Pal - Dozen/Pal	Mq/Pal M2/Pal - M2/Pal M2/Pal - M2/Pal	Peso/pal Weight/Pal - Gewicht/Pal Poids/Pal - Gewicht/Pal
45X45X0,9	8	1.63	27.33	44	71.72	1202.52
7X45 Battiscopa	18	/	/	/	/	/

MINERAL



Mineral Marfil



Mineral Beige



Mineral Grey



Mineral Dark Grey



Mineral Beige_45x45_18"x18"



Mineral Marfil_45x45_18"x18"



Mineral Dark Grey_45x45_18"x18"



Mineral Grey_45x45_18"x18"



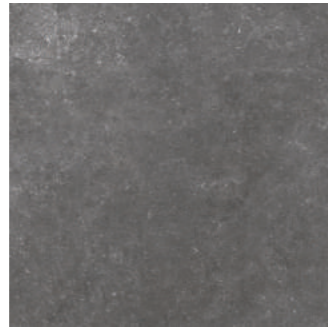
MARFIL
PT DU100N 45x45 - 18"x18"



BEIGE
PT DU110N 45x45 - 18"x18"



GREY
PT DU120N 45x45 - 18"x18"



DARK GREY
PT DU140N 45x45 - 18"x18"

Battiscopa

Skirting | Sockel | Plinthe | Plint



MARFIL
PT DU101N 7x45 - 3"x18"



BEIGE
PT DU111N 7x45 - 3"x18"



GREY
PT DU121N 7x45 - 3"x18"



DARK GREY
PT DU141N 7x45 - 3"x18"

Conforme UNI EN 14411 All. G Bla Group | Comply with UNI EN 14411 All. G Gruppe Bla | Erfüllt UNI EN 14411 All. G Gruppe Bla | Classification Uni En 14411 All. G Bla Group



MINERAL

FORMATO SIZE - FORMAT FORMAT - FORMAAT	Pz./Scat. Pcs/Box - St/Krt Pcs/Bte - St/Doos	Mq/Scat. M2/Box - M2/Krt M2/Bte - M2/Doos	Peso/Scat. Weight/Box - Gewicht/Krt Poids/Bte - Gewicht/Doos	Scat./pal Boxes/Pal - Krt/Pal Bte/Pal - Dozen/Pal	Mq/Pal M2/Pal - M2/Pal M2/Pal - M2/Pal	Peso/pal Weight/Pal - Gewicht/Pal Poids/Pal - Gewicht/Pal
45X45X0,9	8	1.63	27.33	44	71.72	1202.52
7X45 Battiscopa	18	/	/	/	/	/

SUBWAY



Subway Sand



Subway Ash



Subway Fog



Subway Patchwork Mix





Subway Sand_45x45_18"x18"



Subway Fog / Patchwork Mix_45x45_18"x18"



SAND
PT 45SW1 45x45 - 18"x18"



ASH
PT 45SW2 45x45 - 18"x18"



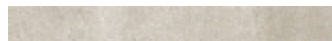
FOG
PT 45SW3 45x45 - 18"x18"



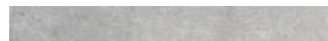
PATCHWORK MIX 2
PT 45SW4 45x45 - 18"x18"



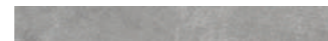
Battiscopa
Skirting | Sockel | Plinthe | Plint



SAND
PT 45SW10 7x45 - 3"x18"



ASH
PT 45SW20 7x45 - 3"x18"





FOG
PT 45SW30 7x45 - 3"x18"

Conforme UNI EN 14411 All. G Bla Group | Comply with UNI EN 14411 All. G Gruppe Bla | Erfüllt UNI EN 14411 All. G Gruppe Bla | Classification Uni En 14411 All. G Bla Group

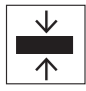

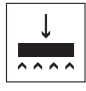





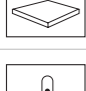
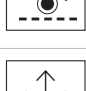



SUBWAY

FORMATO SIZE - FORMAT FORMAT - FORMAAT	Pz./Scat. Pcs/Box - St/Krt Pcs/Bte - St/Doos	Mq/Scat. M2/Box - M2/Krt M2/Bte - M2/Doos	Peso/Scat. Weight/Box - Gewicht/Krt Poids/Bte - Gewicht/Doos	Scat./pal Boxes/Pal - Krt/Pal Bte/Pal - Dozen/Pal	Mq/Pal M2/Pal - M2/Pal M2/Pal - M2/Pal	Peso/pal Weight/Pal - Gewicht/Pal Poids/Pal - Gewicht/Pal
45X45X0,9	8	1.63	27.33	44	71.72	1202.52
7X45 Battiscopa	18	/	/	/	/	/

		Reference Standard:	EN 14411: 2012 Ceramic Floor and Wall Tiles: Definitions, Classification, Characteristics and Marking
		Product Type:	Dry Pressed: Group GL Bla
		Punto Tiles:	Glazed Porcelain Tiles
		Use:	Internal and External Wall and Floor Tiles
Technical features Caratteristiche tecniche Technische Daten Caractéristiques techniques	Norm Norma Norm Norme	Values required by the norms Valore prescritto dalle norme Normvorschriften Werte Valeur Prescrite	Galileo value Valore Galileo Galileo Werte Valeur Galileo

GRES PORCELLANATO SMALTATO . GLAZED PORCELAIN STONWARE . FEINSTEINZEUG GLASIERT GRÈS CERAME EMAILLÈ

	Sizes Dimensioni Abmessungen Dimensions	ISO 10545-2	Lunghezza e larghezza/ length and width Länge und Breite / Longueur et largeur $\pm 0,6\%$ Spessore/ thickness/ Stärke / Epaisseur $\pm 5\%$ Rettilineità spigoli/ linearity/ Kantengeradheit / Rectitude des arêtes $\pm 0,5\%$ Ortogonalità/ wedging/ Rechtwinkligkeit Orthogonalité $\pm 0,6\%$ Planarità/ warpage / Ebenflächigkeit Planéité $\pm 0,5\%$	Conforme Anforderungen erfüllt In accordance Conforme
	Water absorption Assorbimento d'acqua Wasseraufnahme Absorption d'eau	ISO 10545-3	$\leq 0,5\%$	Conforme Anforderungen erfüllt In accordance Conforme
	Breaking strength Resistenza alla flessione Biegefestigkeit Résistance à la flexion	ISO 10545-4	35 N/ MM2 1300 N (for thickness $\geq 7,5$ mm)	R ≥ 35 N/ MM2 S ≥ 1300 N
	Resistance to acid Resistenza agli acidi Säurebeständigkeit Résistance aux produits chimique	ISO 10545-13	Classe GB min. GLB min. GHB min. Class GB min. GLB min. GHB min.	Non attaccati Not attacked
	Resistance against abrasion (PEI) Resistenza all'abrasione (PEI) Abriebfestigkeit (PEI) Résistance à l'abrasion (PEI)	ISO 10545-7	Abrasion class from I to V Classi di abrasione da I a V	PEI IV
	Frost resistance Resistenza al gelo Frostbeständigkeit Résistance au gel	ISO 10545-12	Frost proof/Resiste / Beständig	Frost proof Resiste Beständig
	Static coefficient of friction Coefficiente d'attrito (scivolosità) Rutschhemmung (Schlüpfrigkeit) Résistance au Glissement	DIN 51130	$\geq R9$	R9 R10 (Icon, Mineral)
	Mohs surface hardness Durezza superficie Mohs Ritzhärte nach Mohs Dureté surface Mohs	UNI EN 101	≥ 5	Conforme Anforderungen erfüllt In accordance Conforme
	Crazing to staining Resistenza alle macchie Fleckenbeständigkeit Résistance aux taches	ISO 10545-14	≥ 3	Conforme Anforderungen erfüllt In accordance Conforme
	Temperature changes Resistenza agli sbalzi termici Temperatur-Wechselbeständigkeit Résistance aux variations thermiques	ISO 10545-9	-	Resiste Stands up Beständig
	Coeficiente di dilatazione termica lineare Coefficient of linear thermal expansion Wärmeausdehnungskoeffizient Coef cient de dilatation thermique lineaire	ISO 10545-8	$\alpha \leq 7 \times 10^{-6} / ^\circ\text{C}$	Resiste Stands up Beständig

PUNTO • TILES | 60X60

PLAZA p.46

PURE p.56

SECTOR p.64

TOWN p.72

Punto Tiles behoudt het recht om, indien nodig, technische en formele wijzigingen aan te brengen aan de in de catalogoog vermelde informatie.

Punto Tiles reserves the right to modify technical and formal details included in the catalogue.

Punto Tiles behält sich ausdrücklich das Recht vor, technische Änderungen vorzunehmen.

Punto Tiles se réserve le droit d'apporter, si nécessaire, des modifications techniques et formelles aux information présentes dans ce catalogue.

Punto Tiles si riserva di diritto di apportare qualora lo ritenesse opportuno, eventuali modifiche tecniche e formali ai dati riportati in questo catalogo.

PLAZA



Plaza Bianco



Plaza Avorio



Plaza Grigio



Plaza Tabacco





Plaza Tabacco_60x60_24"x24"



Plaza Bianco_60x60_24"x24"



Plaza Grigio_60x60_24"x24"



BIANCO
PT 6110 60x60 - 24"x24"



AVORIO
PT 6120 60x60 - 24"x24"



GRIGIO
PT 6130 60x60 - 24"x24"



TABACCO
PT 6140 60x60 - 24"x24"

Battiscopa

Skirting | Sockel | Plinthe | Plint



BIANCO
PT 6111 8x60 - 3"x24"



AVORIO
PT 6121 8x60 - 3"x24"



GRIGIO
PT 6131 8x60 - 3"x24"



TABACCO
PT 6141 8x60 - 3"x24"

Conforme UNI EN 14411 All. G Bla Group | Comply with UNI EN 14411 All. G Gruppe Bla | Erfüllt UNI EN 14411 All. G Gruppe Bla | Classification Uni En 14411 All. G Bla Group



PLAZA

FORMATO SIZE - FORMAT FORMAT - FORMAAT	Pz./Scat. Pcs/Box - St/Krt Pcs/Bte - St/Doos	Mq/Scat. M2/Box - M2/Krt M2/Bte - M2/Doos	Peso/Scat. Weight/Box - Gewicht/Krt Poids/Bte - Gewicht/Doos	Scat./pal Boxes/Pal - Krt/Pal Bte/Pal - Dozen/Pal	Mq/Pal M2/Pal - M2/Pal M2/Pal - M2/Pal	Peso/pal Weight/Pal - Gewicht/Pal Poids/Pal - Gewicht/Pal
60X60X0,8	4	1.46	23.8	40	58.40	975.28
8X60 Battiscopa	21	/	/	/	/	/

PURE



Pure White



Pure Beige



Pure Grey



Pure White_60x60_24"x24"



Pure Beige_60x60_24"x24"



Pure Grey_60x60_24"x24"



WHITE
PT 6210 60x60 - 24"x24"



BEIGE
PT 6220 60x60 - 24"x24"



GREY
PT 6230 60x60 - 24"x24"

Battiscopa

Skirting | Sockel | Plinthe | Plint



WHITE
PT 6211 8x60 - 3"x24"



BEIGE
PT 6221 8x60 - 3"x24"



GREY
PT 6231 8x60 - 3"x24"

Conforme UNI EN 14411 All. G Bla Group | Comply with UNI EN 14411 All. G Gruppe Bla | Erfüllt UNI EN 14411 All. G Gruppe Bla | Classification Uni En 14411 All. G Bla Group



PURE

FORMATO SIZE - FORMAT FORMAT - FORMAAT	Pz./Scat. Pc/Box - St/Krt Pcs/Bte - St/Doos	Mq/Scat. M2/Box - M2/Krt M2/Bte - M2/Doos	Peso/Scat. Weight/Box - Gewicht/Krt Poids/Bte - Gewicht/Doos	Scat./pal Boxes/Pal - Krt/Pal Bte/Pal - Dozen/Pal	Mq/Pal M2/Pal - M2/Pal M2/Pal - M2/Pal	Peso/pal Weight/Pal - Gewicht/Pal Poids/Pal - Gewicht/Pal
60X60X0,8	4	1.46	23.8	40	58.40	975.28
8X60 Battiscopa	21	/	/	/	/	/

SECTOR



Sector White



Sector Grey



Sector White_60x60_24"x24"



Sector Grey_60x60_24"x24"



Sector Grey_60x60_24"x24"



WHITE
PT 6410 60x60 - 24"x24"



GREY
PT 6420 60x60 - 24"x24"

Battiscopa

Skirting | Sockel | Plinthe | Plint



WHITE
PT 6411 8x60 - 3"x24"



GREY
PT 6421 8x60 - 3"x24"

Conforme UNI EN 14411 All. G Bla Group | Comply with UNI EN 14411 All. G Gruppe Bla | Erfüllt UNI EN 14411 All. G Gruppe Bla | Classification Uni En 14411 All. G Bla Group



SECTOR

FORMATO SIZE - FORMAT FORMAT - FORMAAT	Pz./Scat. Pcs/Box - St/Krt Pcs/Bte - St/Doos	Mq/Scat. M2/Box - M2/Krt M2/Bte - M2/Doos	Peso/Scat. Weight/Box - Gewicht/Krt Poids/Bte - Gewicht/Doos	Scat./pal Boxes/Pal - Krt/Pal Bte/Pal - Dozen/Pal	Mq/Pal M2/Pal - M2/Pal M2/Pal - M2/Pal	Peso/pal Weight/Pal - Gewicht/Pal Poids/Pal - Gewicht/Pal
60X60X0,8	4	1.46	23.8	40	58.40	975.28
8X60 Battiscopa	21	/	/	/	/	/

TOWN



Town Marfil



Town Beige



Town Grey



Town Dark Grey



Town Marfil_60x60_24"x24"



Town Beige_60x60_24"x24"



Town Marfil_60x60_24"x24"



Town Grey_60x60_24"x24"



Town Dark Grey_60x60_24"x24"



MARFIL
PT 6310 60x60 - 24"x24"



BEIGE
PT 6320 60x60 - 24"x24"



GREY
PT 6330 60x60 - 24"x24"



DARK GREY
PT 6340 60x60 - 24"x24"

Battiscopa

Skirting | Sockel | Plinthe | Plint



MARFIL
PT 6311 8x60 - 3"x24"



BEIGE
PT 6321 8x60 - 3"x24"



GREY
PT 6331 8x60 - 3"x24"





DARK GREY
PT 6341 8x60 - 3"x24"

Conforme UNI EN 14411 All. G Bla Group | Comply with UNI EN 14411 All. G Gruppe Bla | Erfüllt UNI EN 14411 All. G Gruppe Bla | Classification Uni En 14411 All. G Bla Group



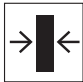

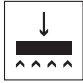





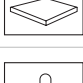
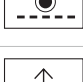

TOWN

FORMATO SIZE - FORMAT FORMAT - FORMAAT	Pz./Scat. Pcs/Box - St/Krt Pcs/Bte - St/Doos	Mq/Scat. M2/Box - M2/Krt M2/Bte - M2/Doos	Peso/Scat. Weight/Box - Gewicht/Krt Poids/Bte - Gewicht/Doos	Scat./pal Boxes/Pal - Krt/Pal Bte/Pal - Dozen/Pal	Mq/Pal M2/Pal - M2/Pal M2/Pal - M2/Pal	Peso/pal Weight/Pal - Gewicht/Pal Poids/Pal - Gewicht/Pal
60X60X0,8	4	1.46	23.8	40	58.40	975.28
8X60 Battiscopa	21	/	/	/	/	/

		Reference Standard:	EN 14411: 2012 Ceramic Floor and Wall Tiles: Definitions, Classification, Characteristics and Marking
		Product Type:	Dry Pressed: Group GL Bla
		Punto Tiles:	Glazed Porcelain Tiles
		Use:	Internal and External Wall and Floor Tiles

Technical features	Norm	Values required by the norms	Factory
Caratteristiche tecniche	Norma	Valore prescritto dalle norme	Fabbrica
Technische Daten	Norm	Normvorschriften Werte	Fabrik
Caractéristiques techniques	Norme	Valeur Prescrite	Fabrique

GRES PORCELLANATO SMALTATO . GLAZED PORCELAIN STONEWARE . FEINSTEINZEUG GLASIERT GRÈS CERAME EMAILLÉ

	Sizes Dimensioni Abmessungen Dimensions	ISO 10545-2	Lunghezza e larghezza/ lenght and width Länge und Breite / Longueur et largeur ± 0,6% Spessore/ thickness/ Stärke / Epaisseur ± 5% Rettilinearità spigoli/ linearity/ Kantengeradheit / Rectitude des arêtes ± 0,5% Ortogonalità/ wedging/ Rechtwinkligkeit Orthogonalité ± 0,6% Planarità/ warpage / Ebenflächigkeit Planéité ± 0,5%	Conforme Anforderungen erfüllt In accordance Conforme
	Water absorption Assorbimento d'acqua Wasseraufnahme Absorption d'eau	ISO 10545-3	≤ 0,5%	Conforme Anforderungen erfüllt In accordance Conforme
	Breaking strength Resistenza alla flessione Biegefestigkeit Résistance à la flexion	ISO 10545-4	35 N/ MM2 1300 N (for thickness ≥ 7,5 mm)	R ≥ 35 N/ MM2 S ≥ 1300 N
	Resistance to acid Resistenza agli acidi Säurebeständigkeit Résistance aux produits chimique	ISO 10545-13	Classe GB min. GLB min. GHB min. Class GB min. GLB min. GHB min.	Non attaccati Not attacked
	Resistance against abrasion (PEI) Resistenza all'abrasione (PEI) Abriebfestigkeit (PEI) Résistance à l'abrasion (PEI)	ISO 10545-7	Abrasion class from I to V Classi di abrasione da I a V	PEI IV
	Frost resistance Resistenza al gelo Frostbeständigkeit Résistance au gel	ISO 10545-12	Frost proof/Resiste / Bestandig	Frost proof Resiste Bestandig
	Static coefficient of friction Coefficiente d'attrito (scivolosità) Rutschhemmung (Schlüpfrigkeit) Résistance au Glissement	DIN 51130	≥ R9	R9
	Mohs surface hardness Durezza superficie Mohs Ritzhärte nach Mohs Dureté surface Mohs	UNI EN 101	≥ 5	Conforme Anforderungen erfüllt In accordance Conforme
	Crazing to staining Resistenza alle macchie Fleckenbeständigkeit Resistance aux taches	ISO 10545-14	≥ 3	Conforme Anforderungen erfüllt In accordance Conforme
	Temperature changes Resistenza agli sbalzi termici Temperatur-Wechselbeständigkeit Résistance aux variations thermiques	ISO 10545-9	-	Resiste Stands up Beständig
	Coeficiente di dilatazione termica lineare Coefficient of linear thermal expansion Wärmeausdehnungskoeffizient Coef cient de dilatation thermique lineaire	ISO 10545-8	$\alpha \leq 7 \times 10^{-6} / ^\circ\text{C}$	Resiste Stands up Beständig

Punto Tiles behoudt het recht om, indien nodig, technische en formele wijzigingen aan te brengen aan de in de catalogo vermelde informatie.

Punto Tiles reserves the right to modify technical and formal details included in the catalogue.

Punto Tiles behält sich ausdrücklich das Recht vor, technische Änderungen vorzunehmen.

Punto Tiles se réserve le droit d'apporter, si nécessaire, des modifications techniques et formelles aux information présentes dans ce catalogue.

Punto Tiles si riserva di diritto di apportare qualora lo ritenesse opportuno, eventuali modifiche tecniche e formali ai dati riportati in questo catalogo.