

INSPIRATION BOOK

by LAMETT



Close to nature



PREFACE

A house should be a home in particular, a place to unwind and to enjoy life. A personal touch to your interior is therefore very important. With this book, we would like to inspire you, presenting you a broad variety of projects. Pictures say more than words. Be surprised by our projects. Throughout the book you may also find tips, presented by our interior expert Eliza and our sales managers.

This book is a tool for inspiration. To show you how a Lamett floor looks in a house. Yet we do not recommend to base your decision on a picture, but rather pay a visit to a Lamett dealer, where you can see the floor. Or have a sample delivered at home.

A list with all the dealers in your area and more info on our samples, you find on our website www.lamett.eu.

PROJECTS

Courchevel.....	8
Oslo.....	12
Stockholm.....	20
Matisse	22
Sorrento.....	26
Farm	32
Carcassonne.....	74
Clusone	82
New York	86
Albi	106
Méribel	110
Country	112
Versailles.....	124

LAMETT ADVISORS

Meet some the Lamett advisors.

They will share their knowledge by giving you tips concerning the different types of floors.

Eliza, our interior designer, will advise you on how to decorate spaces.



Isabel Slambrouck
Sales manager
Belgium



Elewout Decock
Commercial Director
Belgium



Nicolas Piponnier
Commercial Director
France



Christoph Bittner
Sales manager
Germany



Peter Hughes
Sales manager
UK



Anna Wopanowicka
Sales manager
Poland

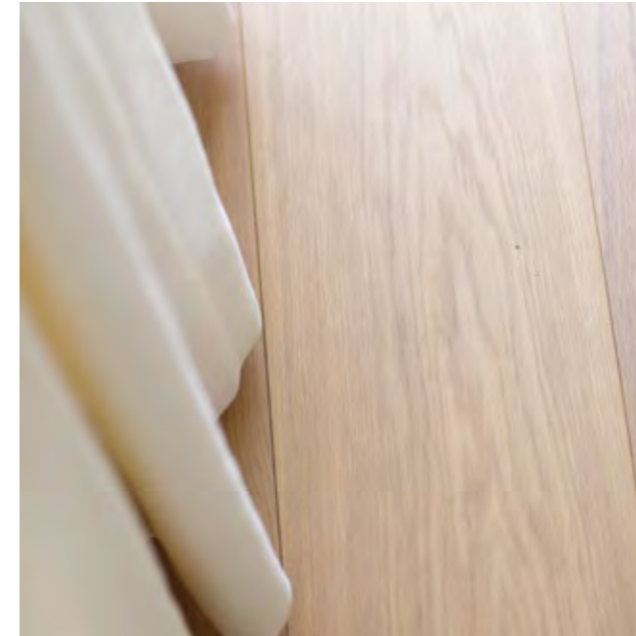


Simon Casas
Sales manager
Spain

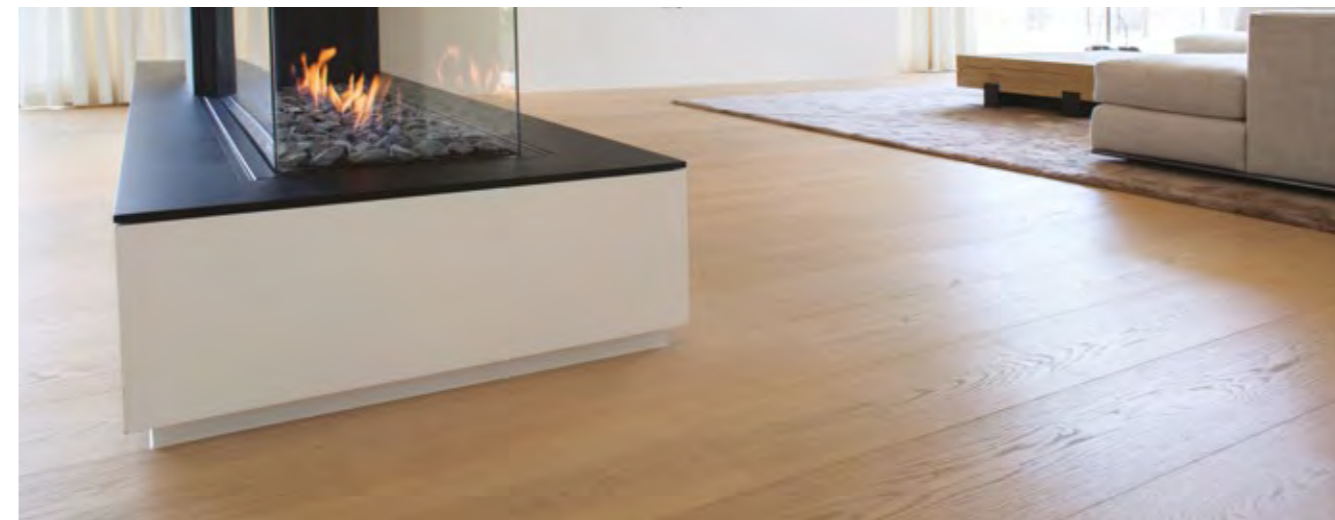


Eliza De Waele
Interior Designer

COURCHEVEL



COLLECTION: Courchevel
COLOUR: Villa
LOCATION: Zwevegem, Belgium



Tip from Isabel

Courchevel Villa! What a nice floor! A clean-lined plank with few knots, made of the best wood! The use of extra wide planks gives grandeur and cache to any home!



OSLO





COLLECTION: Oslo
COLOUR: Mont Blanc
LOCATION: Madrid, Spain



OSLO



COLLECTION: Oslo
COLOUR: Paris Brown
LOCATION: Colombia



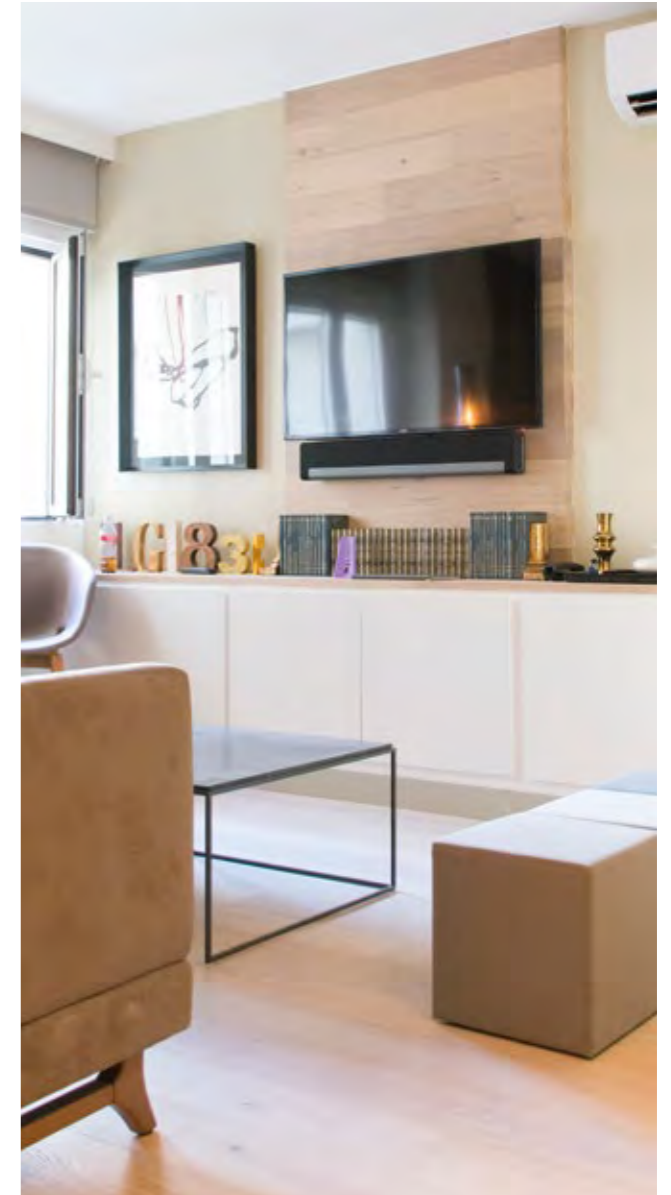
STOCKHOLM

COLLECTION: Stockholm
COLOUR: Cotton White



MATISSE

COLLECTION: Matisse
COLOUR: Pure





Tip from Peter

In this apartment wood was also used on the wall. This gives a warm feel to the home. Note that when you opt for this both parquet floors must be the same. If this is not the case the room can soon appear quite cluttered.

SORRENTO







COLLECTION: Sorrento
COLOUR: Villa
LOCATION: Maison D'Longueville



FARM



COLLECTION: Farm
COLOUR: Traditions
LOCATION: The Netherlands



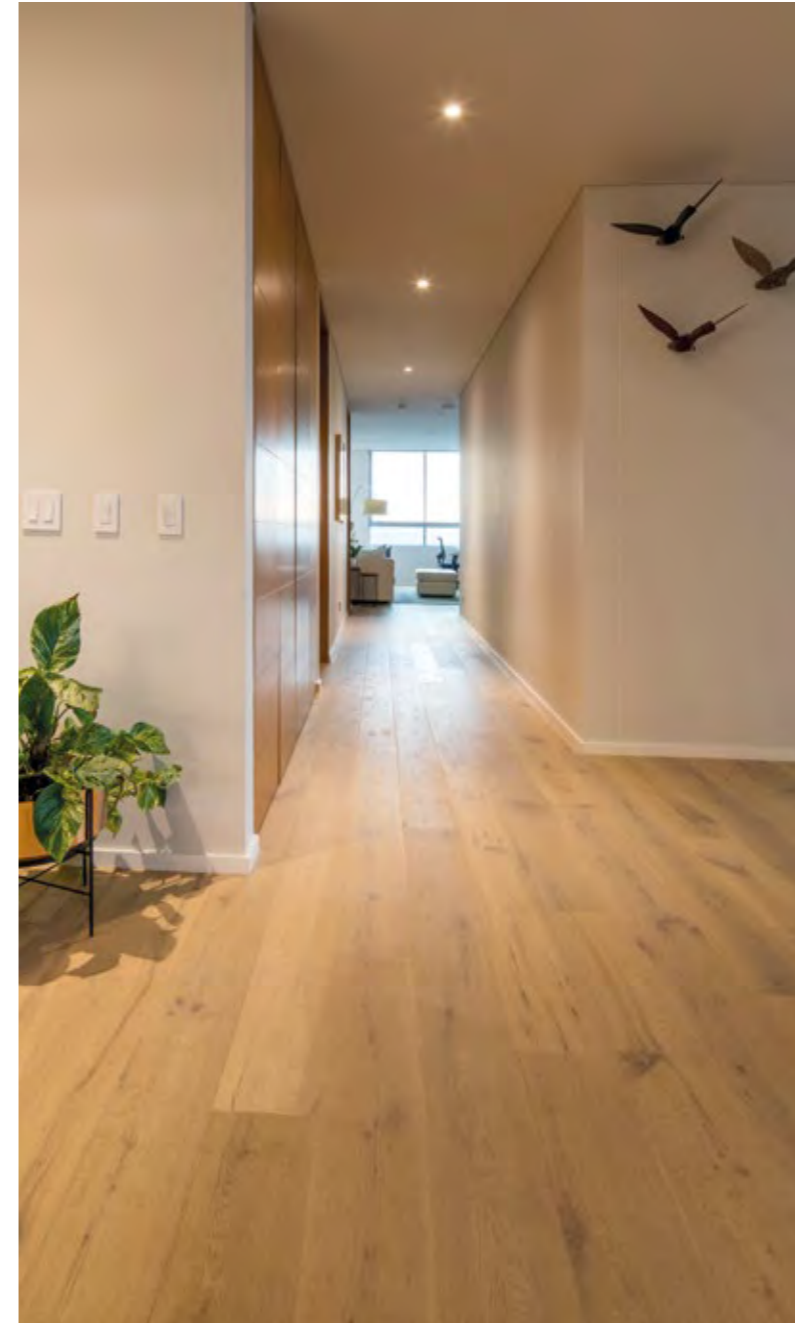


FARM

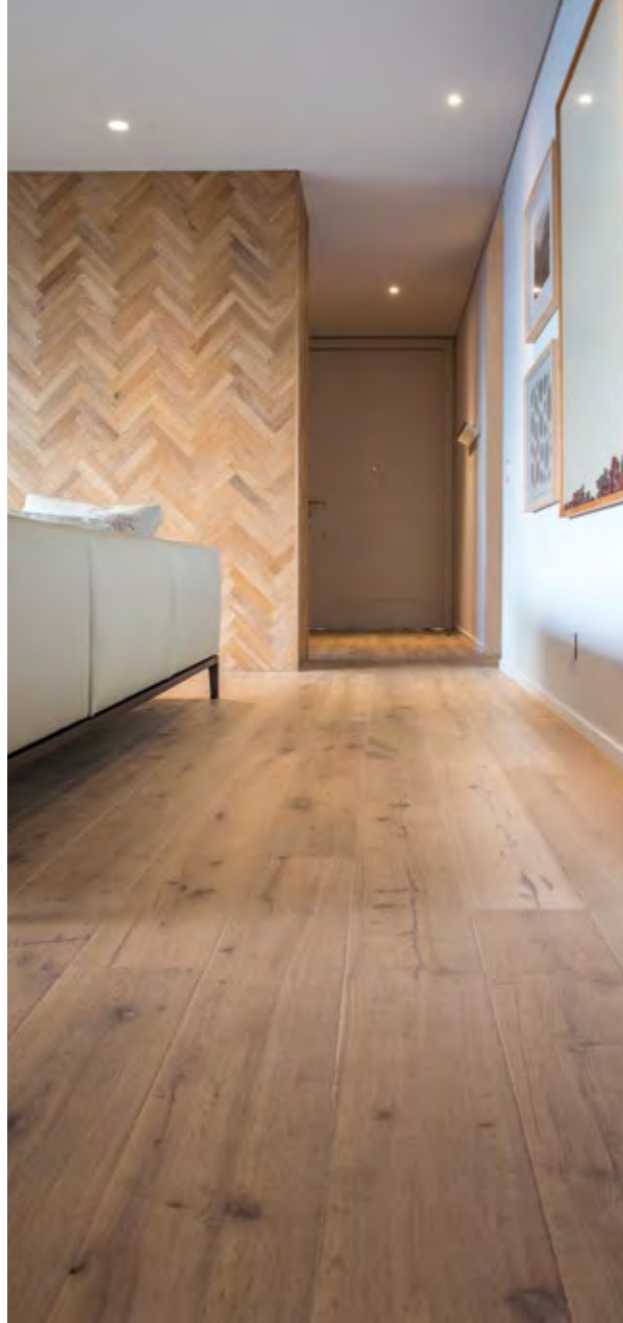


Tip from Eliza

Love the warm and soft interior from this house in Colombia. Great job!



COLLECTION: Farm
COLOUR: Pure
LOCATION: Colombia



FARM

COLLECTION: Farm
COLOUR: Pure
LOCATION: The Netherlands





FARM

COLLECTION: Farm

COLOUR: Traditions

LOCATION: Koevert, Belgium

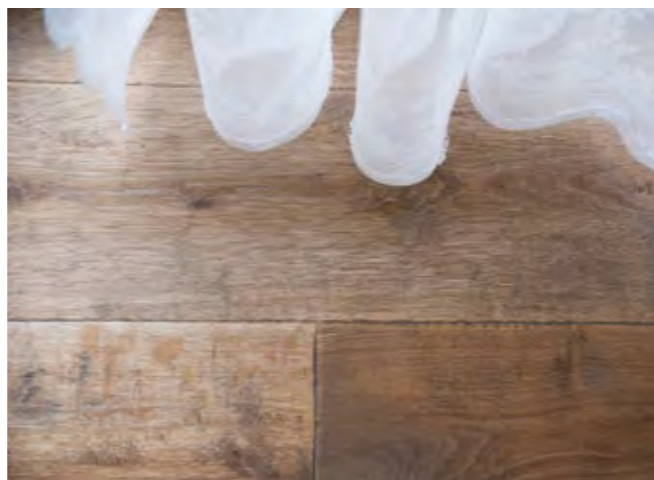
INTERIOR: Glorieux interiors



FARM



COLLECTION: Farm
COLOUR: Antique
LOCATION: The Netherlands





FARM



COLLECTION: Farm
COLOUR: Traditions
LOCATION: Maneje Ponzano, Spain



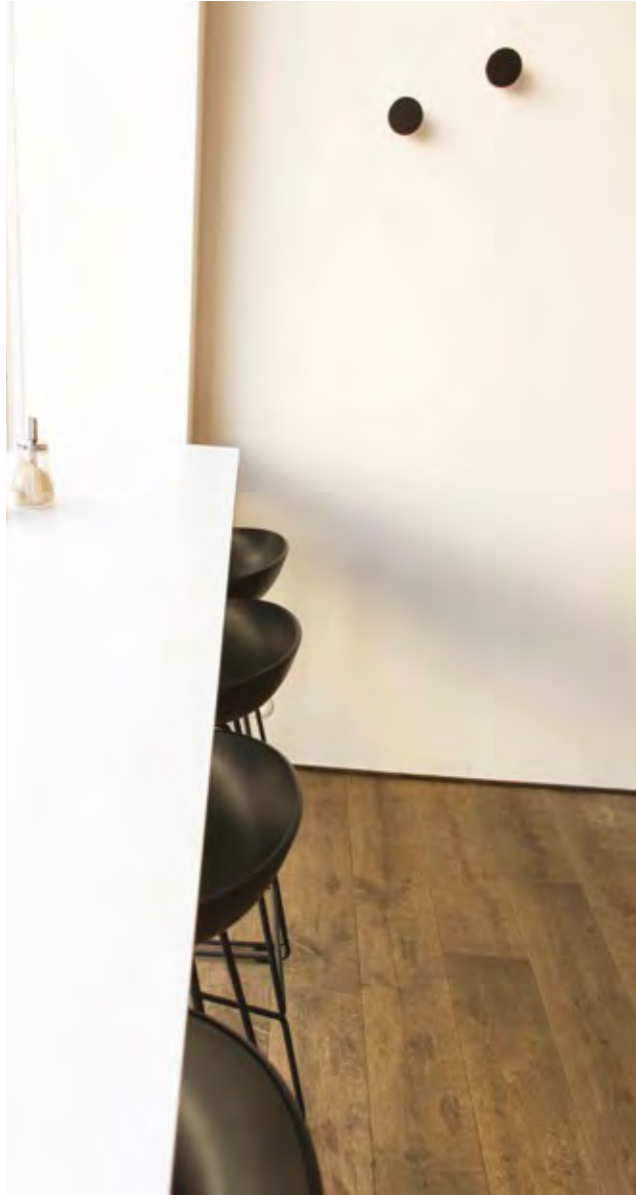
FARM

COLOUR: Old Church
ARCHITECT: Thomas Nachtergaele
LOCATION: Kaffee Renée, Belgium



Tip from Eliza

Kaffee Renée in Kortrijk is a cosy coffee bar. Here one particularly wanted to create warmth by working with different woods. The rustic Farm collection gives the new business buckets of authenticity!

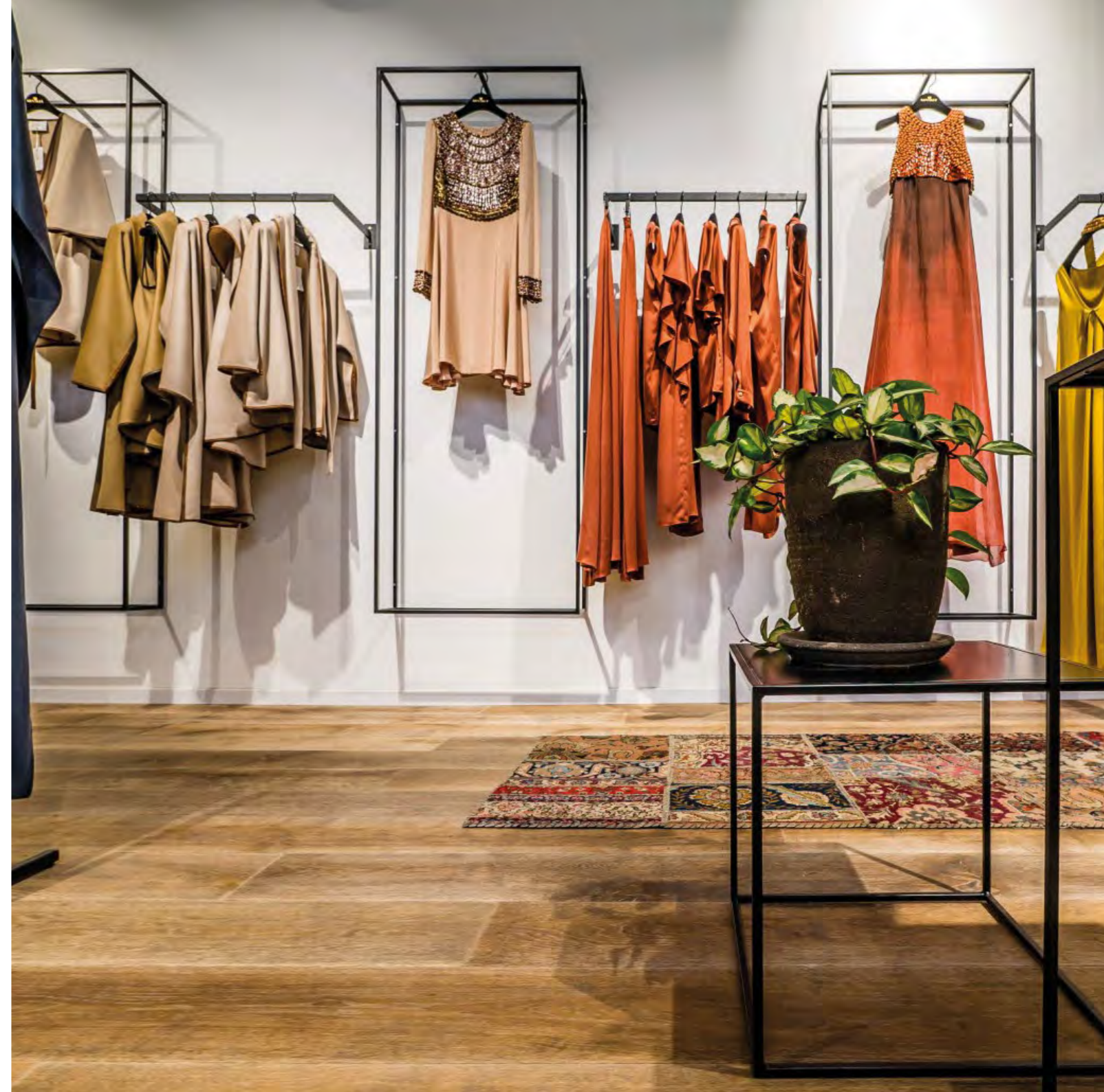


FARM



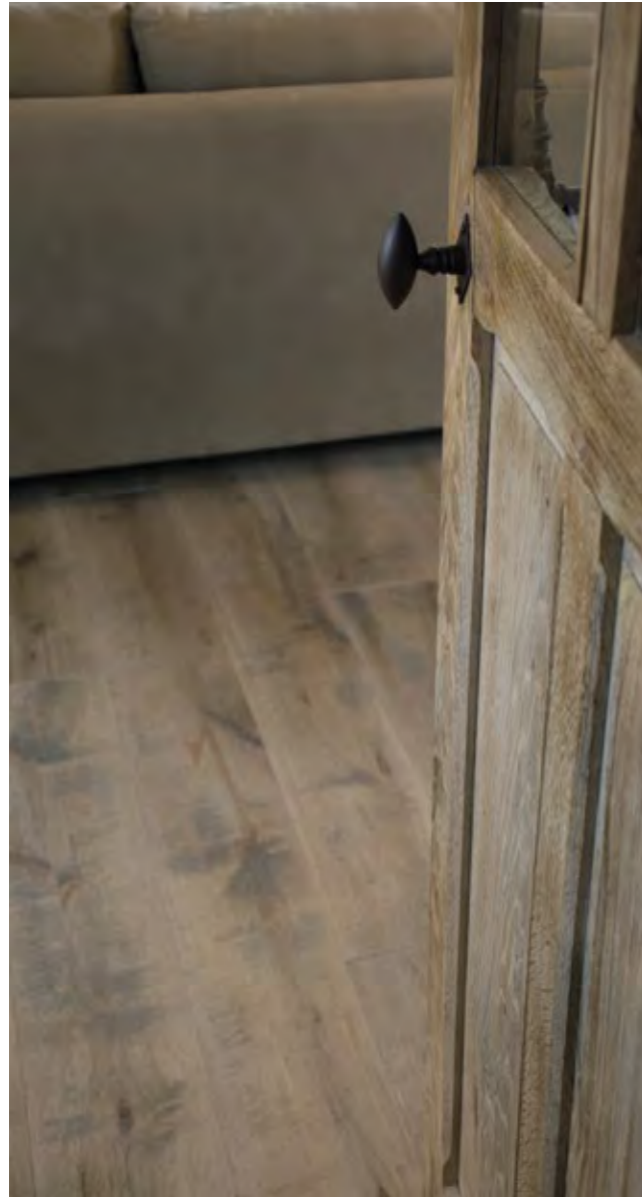
COLLECTION: Farm
COLOUR: Antique
LOCATION: Maskit, Israel

You can find this jewel in the capital city of Israel, a charming clothing store with the Farm Antique. This rustic parquet floor fully comes into its own between the luxurious Maskit attire.





FARM





Tip from Elewout

Farm is my favourite collection because it's the most vivid and you can either use it in a modern interior but also a cottage interior.



COLLECTION: Farm
COLOUR: Harvest
LOCATION: Oakwood Project, Belgium

FARM



COLLECTION: Farm
COLOUR: Antique
LOCATION: La Sabina - Madrid, Spain



FARM



COLLECTION: Farm
COLOUR: Antique

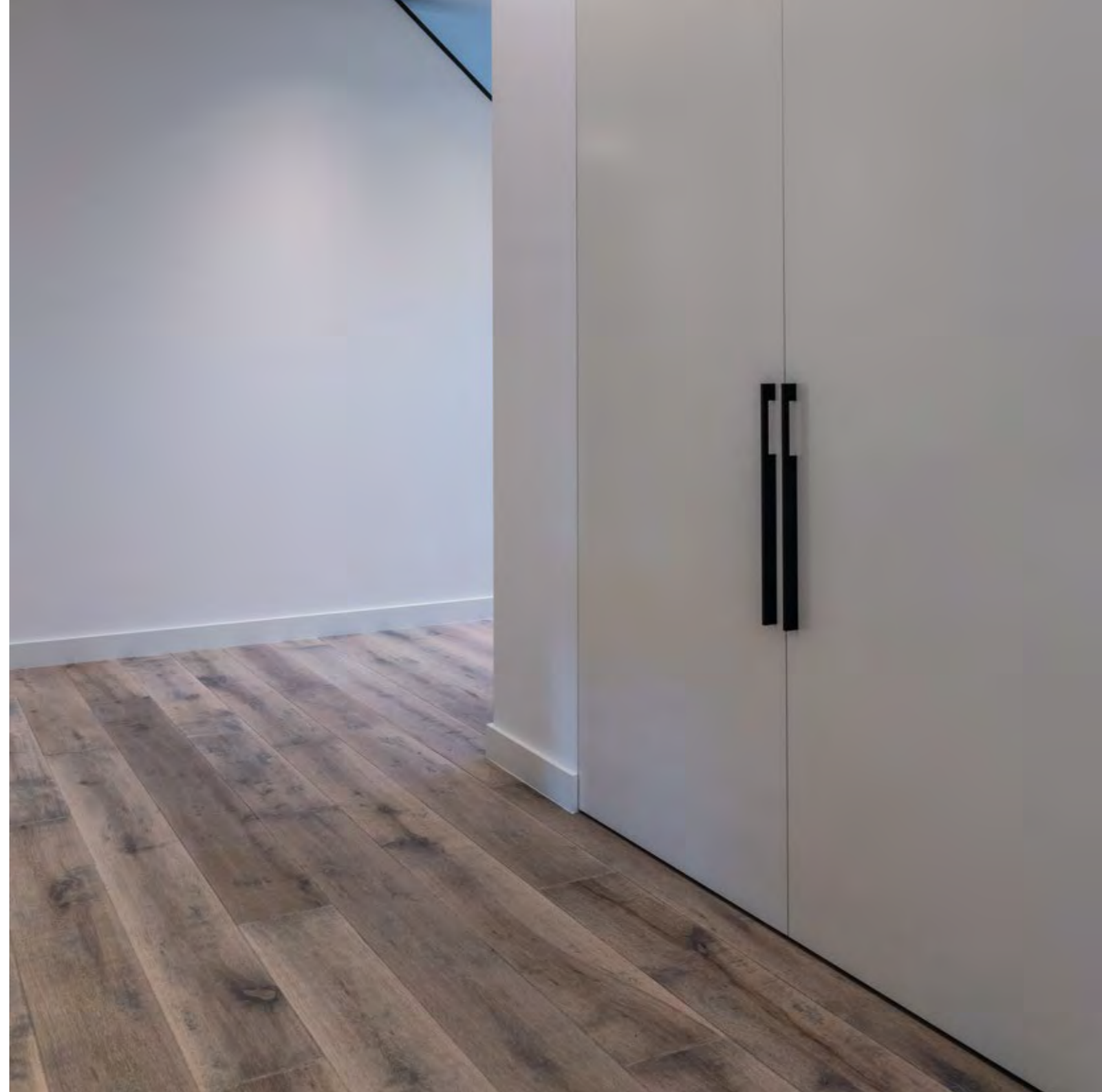
ARCHITECT: Architectenbureau Naert
LOCATION: LVD Experience center



FARM



COLLECTION: Farm
COLOUR: Antique
LOCATION: The Netherlands



CARCASSONNE

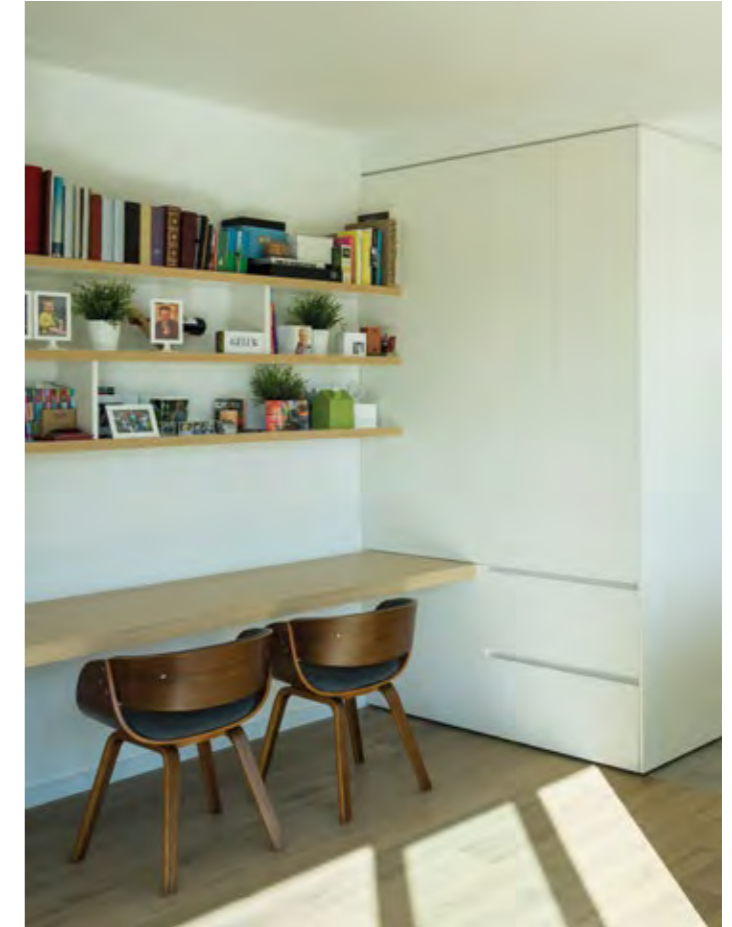
COLLECTION: Carcassonne

COLOUR: Look Unfinished

LOCATION: Belgium

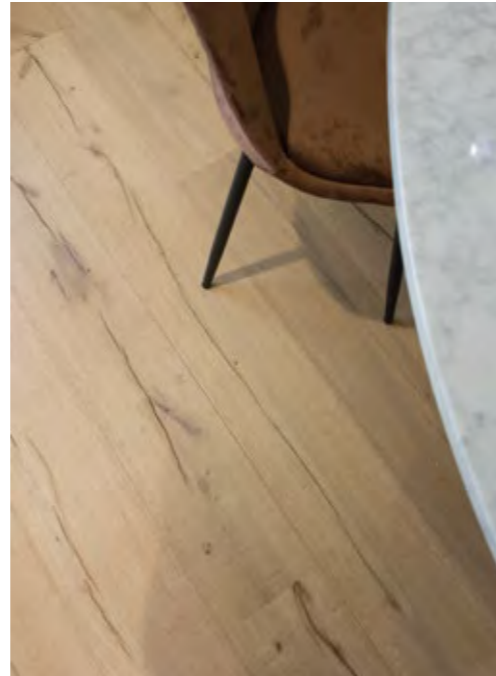


CARCASSONNE



COLLECTION: Carcassonne
COLOUR: Look Unfinished
INTERIOR: Arcoon

CARCASSONE



COLLECTION: Carcassonne
COLOUR: Look Unfinished
LOCATION: Brillenba





CLUSONE





COLLECTION: Clusone
COLOUR: Look Unfinished
LOCATION: Belgium



Tip from Christoph

Clusone is a natural beauty! It looks good in every interior!

NEW YORK



COLLECTION: New York
COLOUR: Natural White
ARCHITECT: Roberto Rábano Domínguez
LOCATION: Madrid, Spain





NEW YORK



COLLECTION: New York
COLOUR: Natural
LOCATION: Madrid





NEW YORK

COLLECTION: New York
COLOUR: Natural
ARCHITECT: Willem Benoit





NEW YORK



Tip from Simon

This dark color really adds up to the warm interior of this lovely apartment in Madrid. The colours make the room very cosy.





COLLECTION: New York
COLOUR: Coffee
LOCATION: Madrid, Spain

NEW YORK

COLLECTION: New York
COLOUR: Pure
LOCATION: Belgium





ALBI



Tip from Nicolas

The Albi collection represents pure craftsmanship: a careful blend of technology and aesthetics. Absolutely eye-catching!



COLLECTION: Albi
COLOUR: Look Unfinished
LOCATION: Eat-Easy-Bar Nude



MÉRIBEL

COLLECTION: Méribel
COLOUR: Villa
LOCATION: Belgium



COUNTRY





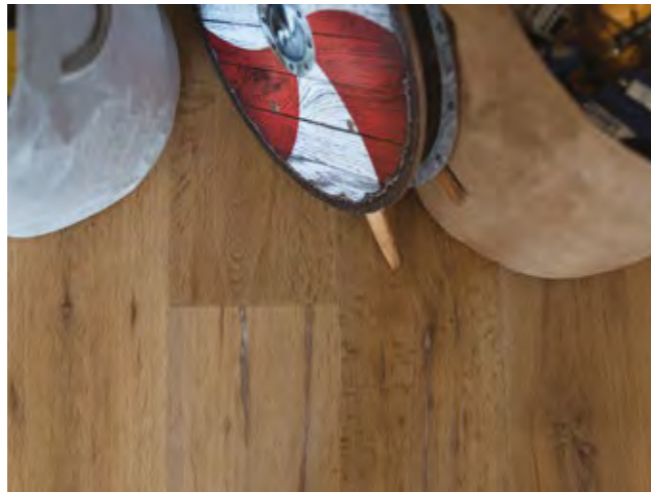
COLLECTION: Country
COLOUR: Double Smoked Pure
LOCATION: Barcelona, Spain



COUNTRY



COLLECTION: Country
COLOUR: Smoked Natural
LOCATION: The Netherlands





COUNTRY



COLLECTION: Country
COLOUR: Smoked Natural
LOCATION: Belgium



VERSAILLES



COLLECTION: Versailles
COLOUR: Villa



VERSAILLES



COLLECTION: Versailles
COLOUR: Cotton White
INTERIOR: Estudio Disak





VERSAILLES



Tip from Anna



A herringbone floor makes your floor a real eye catcher.

COLLECTION: Versailles
COLOUR: Villa





Lamett®

Ter Donkt 2
8540 Deerlijk
Belgium
Tel. +32 56 774 515
Fax +32 56 775 995
info@lamett.eu
www.lamett.eu



#mylamett

€ 25,-